

DESIGNED BY	MPP
DRAWN BY	MPP
CHECKED BY	SMB
DATE	MARCH 2020
SCALE	1" = 20'
STAMP	

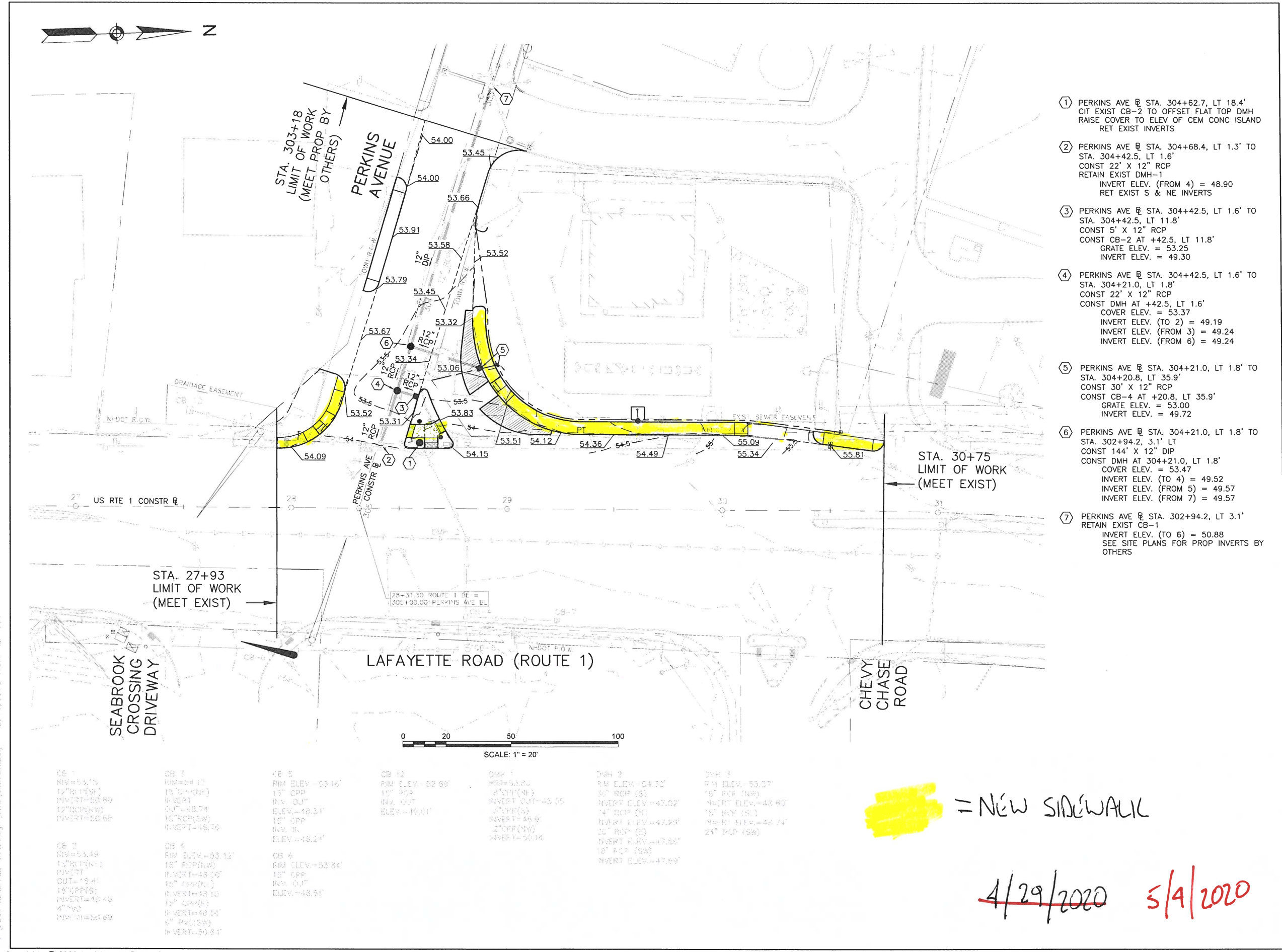
REVISIONS		
NO.	DESCRIPTION	DATE

DRAWING TITLE  
**Grading & Drainage Plan**

- ① PERKINS AVE @ STA. 304+62.7, LT 18.4'  
 CIT EXIST CB-2 TO OFFSET FLAT TOP DMH  
 RAISE COVER TO ELEV OF CEM CONC ISLAND  
 RET EXIST INVERTS
- ② PERKINS AVE @ STA. 304+68.4, LT 1.3' TO  
 STA. 304+42.5, LT 1.6'  
 CONST 22" X 12" RCP  
 RETAIN EXIST DMH-1  
 INVERT ELEV. (FROM 4) = 48.90  
 RET EXIST S & NE INVERTS
- ③ PERKINS AVE @ STA. 304+42.5, LT 1.6' TO  
 STA. 304+42.5, LT 11.8'  
 CONST 5' X 12" RCP  
 CONST CB-2 AT +42.5, LT 11.8'  
 GRATE ELEV. = 53.25  
 INVERT ELEV. = 49.30
- ④ PERKINS AVE @ STA. 304+42.5, LT 1.6' TO  
 STA. 304+21.0, LT 1.8'  
 CONST 22" X 12" RCP  
 CONST DMH AT +42.5, LT 1.6'  
 COVER ELEV. = 53.37  
 INVERT ELEV. (TO 2) = 49.19  
 INVERT ELEV. (FROM 3) = 49.24  
 INVERT ELEV. (FROM 6) = 49.24
- ⑤ PERKINS AVE @ STA. 304+21.0, LT 1.8' TO  
 STA. 304+20.8, LT 35.9'  
 CONST 30" X 12" RCP  
 CONST CB-4 AT +20.8, LT 35.9'  
 GRATE ELEV. = 53.00  
 INVERT ELEV. = 49.72
- ⑥ PERKINS AVE @ STA. 304+21.0, LT 1.8' TO  
 STA. 302+94.2, 3.1' LT  
 CONST 144" X 12" DIP  
 CONST DMH AT 304+21.0, LT 1.8'  
 COVER ELEV. = 53.47  
 INVERT ELEV. (TO 4) = 49.52  
 INVERT ELEV. (FROM 5) = 49.57  
 INVERT ELEV. (FROM 7) = 49.57
- ⑦ PERKINS AVE @ STA. 302+94.2, LT 3.1'  
 RETAIN EXIST CB-1  
 INVERT ELEV. (TO 6) = 50.88  
 SEE SITE PLANS FOR PROP INVERTS BY  
 OTHERS

**[Yellow Highlight]** = NEW SIDEWALK

~~4/29/2020~~ 5/4/2020



I:\A2256\_Sebrook\99\Design\DWG\8350DR.dwg 5/17/2020 10:17 AM E31  
 I:\A2256\_Sebrook\99\Design\DWG\8350DR.dwg