

ROUTE 286

MARSHVIEW CIR

LOWER COLLINS ST

NOTES:

1. TRAIL LOCATION IS APPROXIMATE, FINAL LOCATION WILL BE DETERMINED IN THE FIELD ALONG PATH OF LEAST RESISTANCE FOR MINIMAL CLEARING OF EXISTING VEGETATION.
2. PARKING AREA SHALL BE CONSTRUCTED WITH A PERVIOUS MATERIAL SUCH AS GRAVEL OR CRUSHED STONE, LAYOUT WILL BE DETERMINED IN THE FIELD TO HAVE MINIMAL IMPACT TO EXISTING VEGETATION.
3. POTENTIAL LOOKOUT AT END OF LOWER COLLINS IS APPROXIMATE, FINAL DESIGN AND LOCATION TO BE COORDINATED IN THE FIELD AND IS SUBJECT TO PERMITTING FROM NHDES.

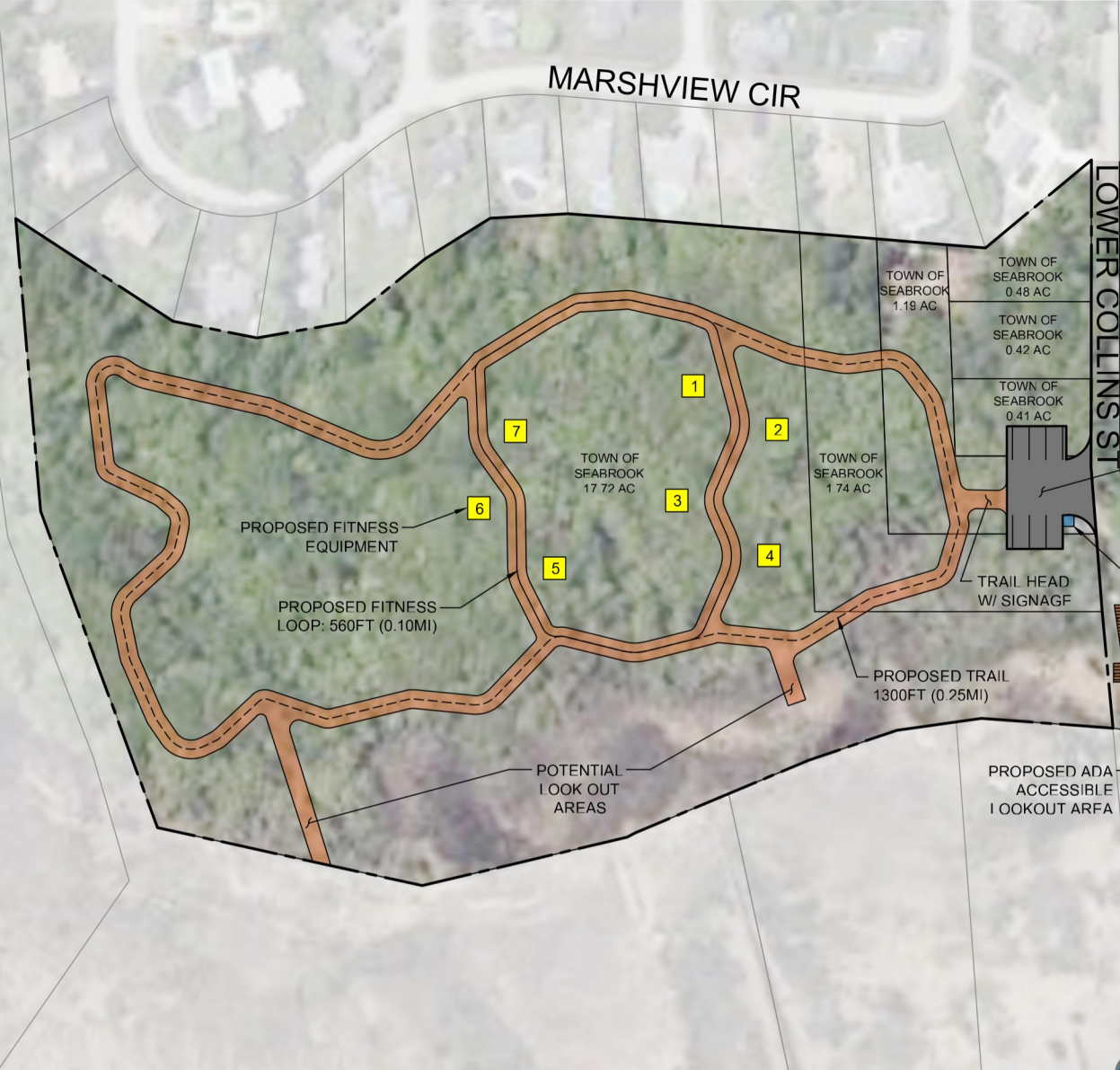
POTENTIAL FITNESS EQUIPMENT
5 STATIONS



7 STATIONS



9 STATIONS



EXAMPLE LOOKOUT AREA



282 Merrimack Street | 169 Ocean Boulevard
2nd Floor | Unit 101, PO Box 249
Lawrence, MA 01843 | Hampton, NH 03842
T: (978) 794-3792
TheEngineeringCorp.com

Scale: 1" = 60'

September 7, 2023

Proposed Nature Trails

O'Adam's Camp Land
240-248 Lower Collins Street
Seabrook, NH